

# SPECIFICATION SHEET

M&E | PD19 & PD20

Potable Cold Water Meter

## Specifications

- The PD water meter consists of three major assemblies: a register, a lead free polymer main case, and a positive displacement (oscillating piston) measuring chamber.
- The PD meter is available with a variety of register types. For reading convenience, the register is mounted hinged on the outlet side of the meter.
- The positive displacement chamber design of the measuring element ensures maximum accuracy in any installation orientation. The measuring unit is optimized for minimal wear.
- All M&E meters meet or exceed AWWA C710 standards.
- M&E provides a limited warranty with respect to its PD water meters for performance, materials, and workmanship.

## Application

For use in measurement of potable cold water in residential, commercial and industrial services where flow is in one direction only.

The PD19/20 main casing is made of polymer, glass filled material with brass threads that comply with NSF/ANSI/CAN 61 and 372. All PD19/20's not only meet or exceed NSF 61 but are also labeled accordingly. The serial number is engraved on the casing.

The combined gear and register unit is fully sealed with straight odometer for visual reading of billable units as well as a group of high-precision pointers for accurate testing by governing agencies. Both the register and pulse unit are pit rated to IP68 (NEMA 6).

Measuring chamber is an oscillating piston type (positive displacement) and is made of engineered plastics that meet NSF 61 standards.

Along with NSF 61 approval, the PD19/20 is also approved with NTEP in both horizontal and vertical positions for cold water applications.



## Features

### Register

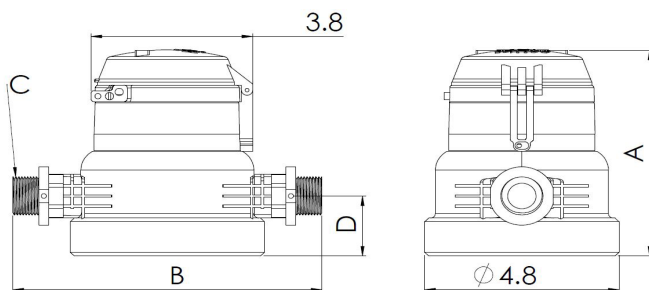
- All M&E meters come standard with pulse output
  - Pulse Reed Switch rating: 24V max and 100 mA max
- All M&E meters are available in either gallon or cubic feet registration
- Magnetic drive, low-torque registration ensures accuracy
- Impact-resistant glass register resists scratching
- High-resolution, low-flow leak detection
- Bayonet-style register mount allows in-line serviceability
- Tamperproof seal pin deters theft
- Date of manufacture, size, and model stamped on dial face

### Lead Free Main Case

- Made from lead free polymer
- NSF/ANSI/CAN 61 and 372 certified
- 3/4" x 7.5" Meter available with 1.5" extension

### Measuring Chamber

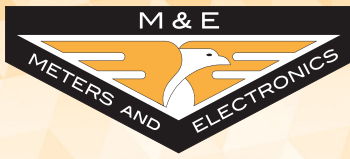
- Oscillating piston measuring chamber
- Widest effective flow range for maximum revenue
- Polymer measuring chamber materials maximize long-term accuracy



	A	B	C	D
PD-19	5.6	7.5	1" MALE NPSM	1.62
PD-20 Short	6.3	7.5	1" MALE NPSM	2.0
PD-20 Long	6.3	9	1" MALE NPSM	2.0



FOR ORDERS & INQUIRIES:  
**877-863-8377**



# SPECIFICATION SHEET

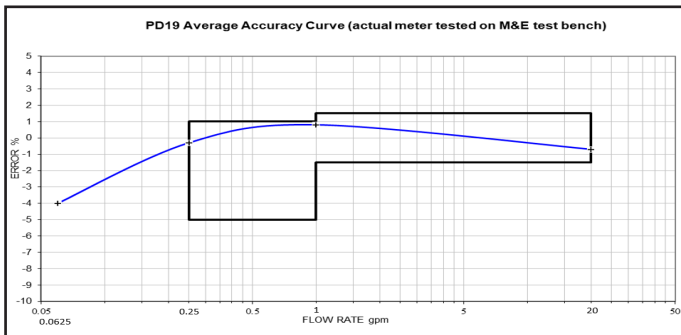
M&E | PD19 & PD20

Potable Cold Water Meter

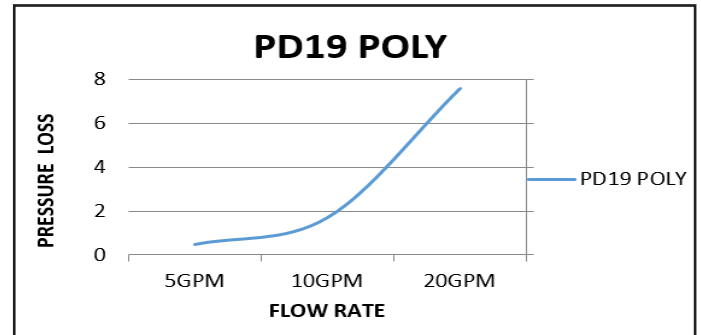
## Size Options

Model # PD19/20	5/8" x 3/4"	3/4" x 3/4" x 7.5"	3/4" x 3/4" x 9"
Normal Operating Range +/- 1.5% GPM (CFM)	1-20 (0.13-2.67)	2-30 (0.27-4.01)	2-30 (0.27-4.01)
Low Flow +1%/-5% GPM (CFM)	0.25 (0.033)	0.5 (0.067)	0.5 (0.067)
Maximum Continuous GPM (CFM)	15 (2.0)	15 (2.0)	15 (2.0)
Maximum Intermittent GPM (CFM)	20 (2.67)	30 (4.01)	30 (4.01)
Maximum Pressure (PSI)	150	150	150
Maximum Temperature (F)	120	120	120
Length (in)	7.5	7.5	9
Overall Height (in)	5.6	6.3	6.3
Height, bottom to center line (in)	1.6	2.0	2.0
Width (in)	4.7	4.7	4.7
Weight (lbs)	2.0	2.87	3.32
Register Capacity millions USG (millions CF)	10 (1)	10 (1)	10 (1)
Pulse Resolution (USG)	1 Pulse = 1 USG	1 Pulse = 1 USG	1 Pulse = 1 USG
Pulse Resolution (CF)	1 Pulse = 0.1 CF	1 Pulse = 0.1 CF	1 Pulse = 0.1 CF

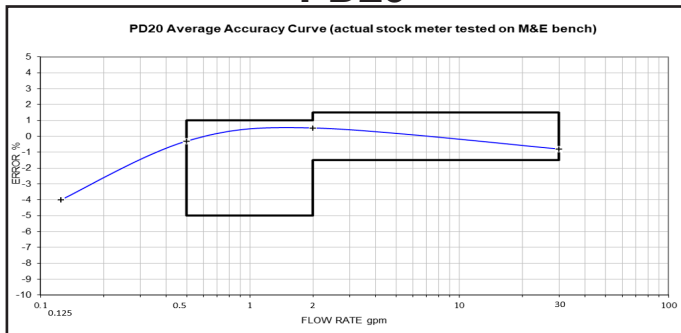
### PD19



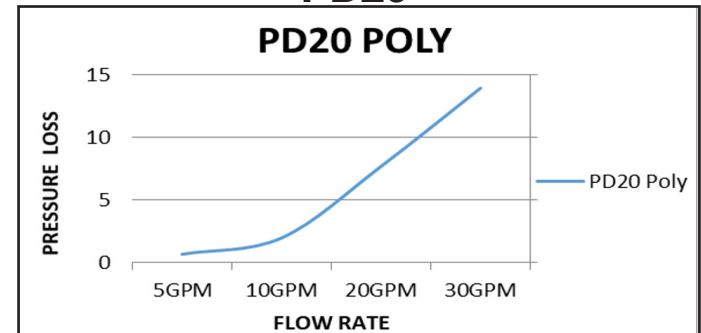
### PD19



### PD20



### PD20



FOR ORDERS & INQUIRIES:  
877-863-8377