

# SPECIFICATION SHEET

M&E | Bronze MJ19, MJ20, MJ25

Multi-Jet Water Meter

## Specifications

- The MJ water meter consists of three major assemblies: a register, a lead free bronze main case, and a multi-jet measuring chamber.
- The MJ meter is available with a variety of register types. For reading convenience, the register is mounted hinged on the outlet side of the meter. The lead-free bronze main case is corrosion resistant and is rated for typical municipal applications.
- The multi-jet measuring chamber design of the measuring element ensures quiet operation with low wear characteristics.
- All M&E meters meet or exceed AWWA C708 standards.
- M&E provides a limited warranty with respect to its MJ water meters for performance, materials, and workmanship.



## Application

For use in measurement of potable cold water in residential, commercial and industrial services where flow is in one direction only.

The MJ 19/20/25 main casing is made of lead free bronze that complies with NSF/ANSI/CAN 61 and 372. All MJ 19/20/25 meters not only meet or exceed NSF 61 but are also labeled accordingly. The serial number is engraved on the casing.

The combined gear and register unit is fully sealed with straight odometer for visual reading of billable units as well as a group of high-precision pointers for accurate testing by governing agencies. Both the register and pulse unit are pit rated to IP68 (NEMA 6).

Measuring chamber is a multi-jet design made of engineered plastics that meet NSF standards.

Along with NSF approval, the MJ 19/20/25 is also approved by NTEP for horizontal installation in cold water applications.

## Features

### Register

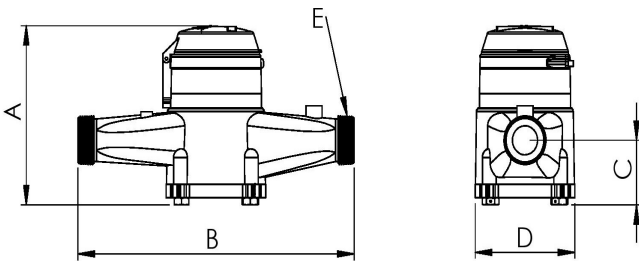
- All M&E meters come standard with pulse output
  - Pulse Reed Switch rating: 24V max and 100 mA max
- All M&E meters are available in either gallon or cubic feet registration
- Magnetic drive, low-torque registration ensures accuracy
- Impact-resistant glass register resists scratching
- High-resolution, low-flow leak detection
- Bayonet-style register mount allows in-line serviceability
- Tamperproof seal pin deters theft
- Date of manufacture, size, and model stamped on dial face

### Lead Free Main Case

- Made from lead free bronze
- NSF/ANSI/CAN 61 and 372 certified
- Includes 1/4" - 20 threaded boss for AMR/AMI pit installations
- Electrical grounding continuity
- 3/4" x 7.5" Meter available with 1.5" extension

### Measuring Chamber

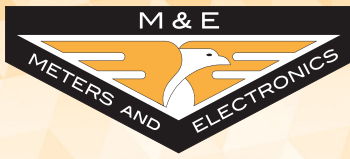
- Velocity-type (multi-jet) measuring chamber
- Widest effective flow range for maximum revenue
- Polymer measuring chamber materials maximize long-term accuracy



	A (in)	B (in)	C (in)	D (in)	E (in)	Weight (lbs)
5/8 x 3/4 MJ	5.5	7.5	1.5	3.7	1" Male NPSM	4.08
3/4 x 3/4 Short	5.5	7.5	1.5	3.7	1" Male NPSM	4.08
3/4 x 3/4 Long (with Bronze Extension Fitting)	5.5	9	1.5	3.7	1" Male NPSM	4.53
1" MJ	6	10.75	2.0	3.95	1.25" Male NPSM	5.84

FOR ORDERS & INQUIRIES:  
877-863-8377





# SPECIFICATION SHEET

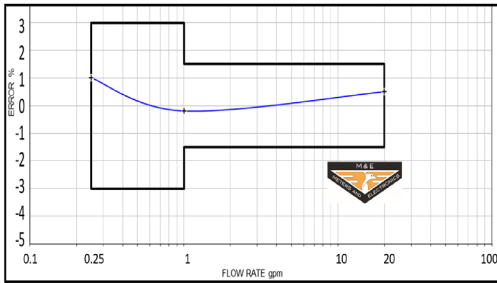
M&E | Bronze MJ19, MJ20, MJ25

Multi-Jet Water Meter

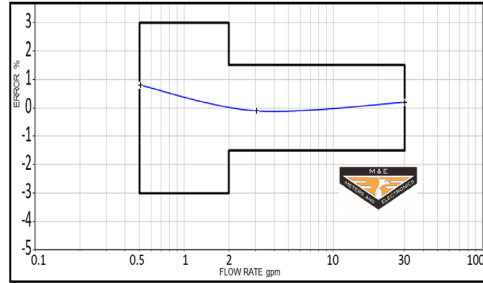
## Size Options

Model # MJ19, MJ20, MJ25	MJ19 5/8" x 3/4"	MJ20 3/4" x 3/4" x 7.5"	MJ20 3/4" x 3/4" x 9"	MJ25 1"
Normal Operating Range +/- 1.5% GPM (CFM)	1-20 (0.13-2.67)	2-30 (0.27-4.01)	2-30 (0.27-4.01)	3-50 (0.40-6.68)
Low Flow +/- 3% GPM (CFM)	0.25 (0.033)	0.5 (0.067)	0.5 (0.067)	0.75 (0.100)
Maximum Continuous GPM (CFM)	10 (1.33)	15 (2.0)	15 (2.0)	25 (3.34)
Maximum Intermittent GPM (CFM)	20 (2.67)	30 (4.01)	30 (4.01)	50 (6.68)
Maximum Pressure (PSI)	150	150	150	150
Maximum Temperature (F)	120	120	120	120
Length (in)	7.5	7.5	9	10.75
Overall Height (in)	5.5	5.5	5.5	6
Height, bottom to center line (in)	1.5	1.5	1.5	2.0
Width (in)	3.7	3.7	3.7	3.95
Weight (lbs)	4.08	4.08	4.53	5.84
Register Capacity millions GPM (millions CFM)	10 (1)	10 (1)	10 (1)	10 (1)
Pulse Resolution (USG)	1 Pulse = 1 or 10 USG	1 Pulse = 1 or 10 USG USG	1 Pulse = 1 or 10 USG USG	1 Pulse = 1 or 10 USG USG
Pulse Resolution (CFM)	1 Pulse = 0.1 or 1 CF	1 Pulse = 0.1 or 1 CF	1 Pulse = 0.1 or 1 CF	1 Pulse = 0.1 or 1 CF

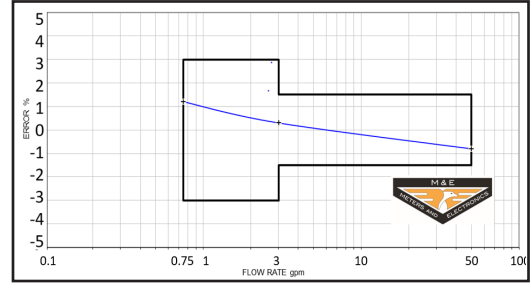
**MJ19 5/8" x 3/4"**



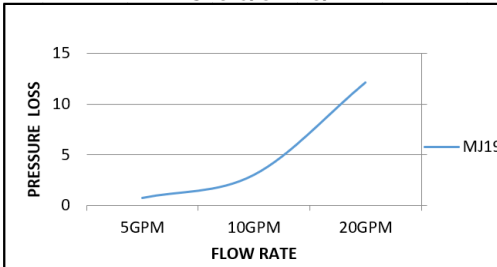
**MJ20 3/4" x 3/4"**



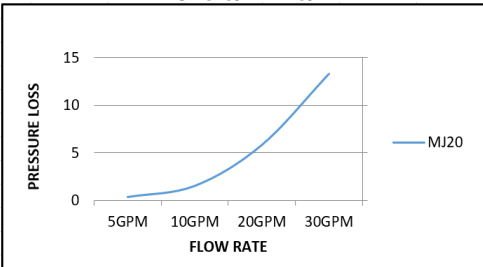
**MJ25 1"**



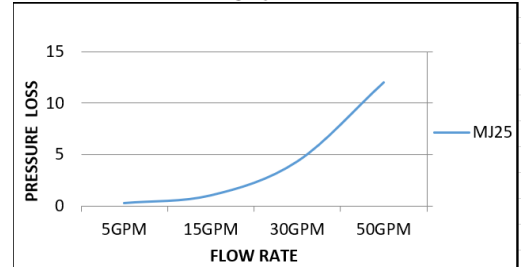
**MJ19 5/8" x 3/4"**



**MJ20 3/4" x 3/4"**



**MJ25 1"**



**\*Note: All data are actual M&E test results.**



FOR ORDERS & INQUIRIES:  
**877-863-8377**